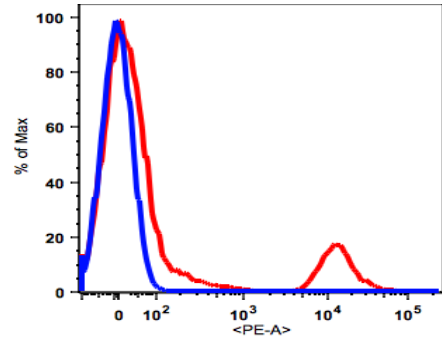




## Anti-human CD20 PE

<b>Catalog #/ Size:</b>	103724 / 25 Tests 103725 / 100 Tests 103726 / 200 Tests
<b>Antigen:</b>	CD20
<b>Conjugate:</b>	PE
<b>Clone:</b>	2H7
<b>Immunogen:</b>	Human tonsillar B cells
<b>Host/Isotype:</b>	Mouse, IgG2b, $\kappa$
<b>Reactivity:</b>	Human
<b>Formulation:</b>	PBS, pH7.2, 0.09% NaN <sub>3</sub> and 0.2% (w/v) BSA
<b>Storage:</b>	2-8°C and protected from prolonged exposure to light. <b>Do not freeze.</b>
<b>Applications:</b>	Flow Cytometry



Lymphocytes gated human PBMCs stained with anti-human CD20 PE (clone 2H7, red histogram). Blue histogram is for the PBMCs stained with PE conjugated IgG2b isotype control.

### Application Information

Each lot of this antibody has been pre-titrated and tested by flow cytometric analysis of human PBMCs such that 5 $\mu$ l of this product is sufficient for staining of 1 million cells in a 100 $\mu$ l staining volume or 100 $\mu$ l of whole blood. It is recommended that antibody reactivity be empirically titrated for optimal performance in the application of interest.

### Antigen Information

The clone 2H7 recognizes the large extracellular loop of human CD20, mapped to the peptide sequence YNCEPANPSEKNSPST. CD20, a 33-36 kDa non-glycosylated type 1 transmembrane protein, is expressed by developing, resting and mature B cells, some follicular dendritic cells, and a small subset of mature T cells. The expression of CD20 on B cell is lost upon differentiation into plasma cells. Functionally, CD20 activation contributes to B cell activation, proliferation, and differentiation.

### References

1. Clark EA, et al. 1985. *Proc Natl Acad Sci USA*. 82:1766.
2. Ledbetter JA & Clark EA. 1986. *Human Immunol*. 15:30.
3. McMichael A, et al. 1987. *Leucocyte Typing III*. Oxford University Press. New York
4. Knapp W, et al. 1989 *Leucocyte Typing IV*. Oxford University Press. New York
5. Schlossman S, et al. 1995 *Leucocyte Typing V*. Oxford University Press. New York

### Terms and Conditions

For research use only (RUO) and not intended for diagnostic testing. If the product does not perform as indicated on the datasheet, Caprico Biotechnologies will offer a replacement or a full refund within 30 days of purchase.