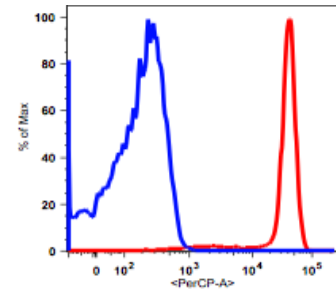




Anti-human CD14 PerCP

Catalog #/ Size:	103434 / 25 Tests 103435 / 100 Tests 103436 / 200 Tests
Antigen:	CD14
Conjugate:	PerCP
Clone:	26ic
Immunogen:	Cultured human peripheral blood monocytes
Host/Isotype:	Mouse, IgG2b, κ
Reactivity:	Human
Formulation:	PBS, pH7.2, 0.09% NaN ₃ and 0.2% (w/v) BSA
Storage:	2-8°C and protected from prolonged exposure to light. Do not freeze.
Applications:	Flow Cytometry



Monocytes gated PBMCs stained with PerCP conjugated anti-human CD14 (clone 26iC) (red histogram). Monocytes gated PBMCs stained with anti-human clone IgG2b PerCP (blue histogram).

Application Information

Each lot of this antibody has been pre-titrated and tested by flow cytometric analysis of human PBMCs such that 5 μ l of this product is sufficient for staining of 1 million cells in a 100 μ l staining volume or 100 μ l of whole blood. It is recommended that antibody reactivity be empirically titrated for optimal performance in the application of interest.

Antigen Information

Clone 26ic reacts with a nonfunctional domain of human CD14, a 53-55 kDa glycosylphosphatidylinositol (GPI)-anchored and single chain glycoprotein expressed at high levels on monocytes. Additionally, CD14 antibody reacts with interfollicular macrophages, reticular dendritic cells and some Langerhans cells. The binding of CD14 antibody does not inhibit CD14 mediated activities, and is useful for detecting CD14 expression by immunofluorescence and or immunocytochemical methods.

References

1. Antal-Szalmas P, et al. 1997. *Leukoc Biol.* 61:721.
2. Antal-Szalmas P, et al. 2001. *Cytometry.* 45:115.
3. Bate C, et al. 2005. *J Neuroimmunol.* 170:62.
4. Detmers PA, et al. 1998. *J Immunol.* 161:1921.
5. Giambartolomei GH, et al. 1999. *Infect Immun.* 67:140.

Terms and Conditions

For research use only (RUO) and not intended for diagnostic testing. If the product does not perform as indicated on the datasheet, Caprico Biotechnologies will offer a replacement item or a full refund within 30 days of purchase.