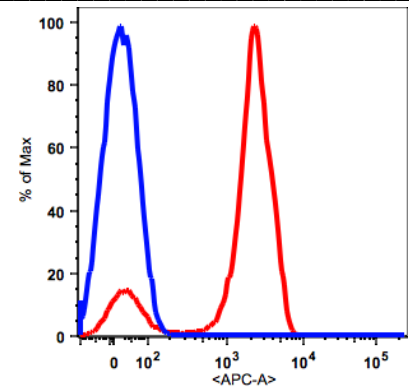




Anti-human CD2 APC

Catalog #/ Size:	100244 / 25 Tests 100245 / 100 Tests 100246 / 200 Tests
Antigen:	CD2
Conjugate:	APC
Clone:	OKT11
Immunogen:	Human acute lymphoblastic leukemia cells
Host/Isotype:	Mouse, IgG1, κ
Reactivity:	Human
Formulation:	PBS, pH7.2, 0.09% NaN ₃ and 0.2% (w/v) BSA
Storage:	2-8°C and protected from prolonged exposure to light. Do not freeze.
Applications:	Flow Cytometry



Lymphocytes gated PBMCs stained with APC conjugated anti-human CD2 (clone OKT11, red histogram). PBMCs lymphocytes stained with IgG2b APC isotype control (blue histogram).

Application Information

Each lot of this antibody has been pre-titrated and tested by flow cytometric analysis of human PBMCs such that 5 μ l of this product is sufficient for staining of 1 million cells in a 100 μ l staining volume or 100 μ l of whole blood. It is recommended that antibody reactivity be empirically titrated for optimal performance in the application of interest.

Antigen Information

CD2 is a 50kD type I transmembrane glycoprotein and a member of the immunoglobulin superfamily. It is a specific marker for T lymphocytes, natural killer cells, thymic B cell subsets, and some antigen presenting cells. CD2 interacts with CD58 (LFA-3) and CD48 to mediate cell adhesion and induce co-stimulatory signals in T lymphocytes.

References

1. Berney S.M, et al. 2000. *J Investig Med.* 48:102.
2. Ip S.H, et al. 1982. *Clin Chem.* 28:1905.
3. Ip S.H, et al. 1982. *Blood.* 60:795.
4. Moingeon P, et al. 1989. *Immunol Rev.* 111:111.
5. Reinherz E.L, et al. 1989 *Cold Spring Harb Symp Quant Biol.* 54:611.
6. Springer T.A, et al. 1987. *Annu Rev Immunol.* 5:223.
7. Verbi W, et al. 1982. *Eur J Immunol.* 12:81.

Terms and Conditions

For research use only (RUO) and not intended for diagnostic testing. If the product does not perform as indicated on the datasheet, Caprico Biotechnologies will offer a replacement item or a full refund within 60 days of purchase.