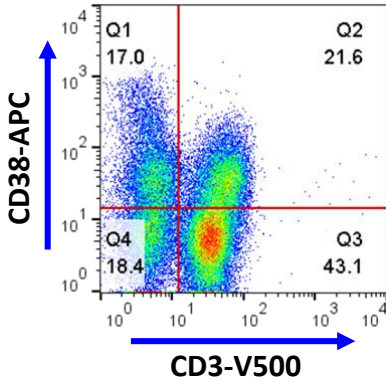




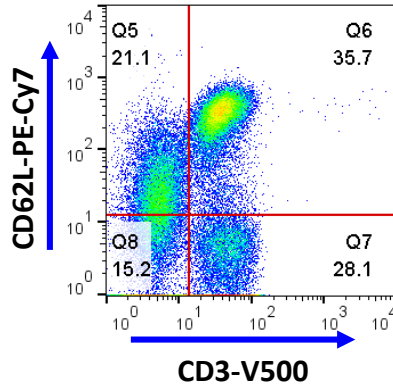
Caprico Biotechnologies

MαH CD38 (OKT10)



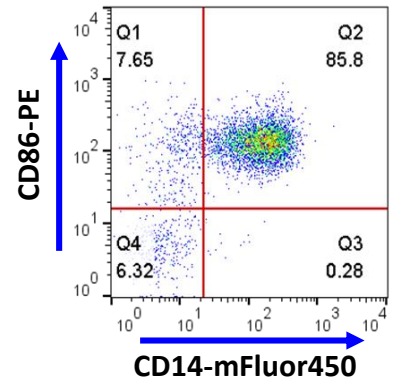
RBC lysed Baboon blood was stained with Caprico CD38-APC and CD3 V500. Lymphocyte population is shown plotted CD3 vs. CD38.

MαH CD62L (DREG56)



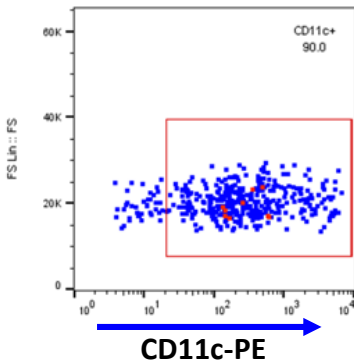
RBC lysed Baboon blood was stained with Caprico CD62L-PE-Cy7 and CD3 V500. Lymphocyte population is shown plotted CD3 vs. CD62L.

MαH CD14 (26ic)/ MαH CD86 (BU63)



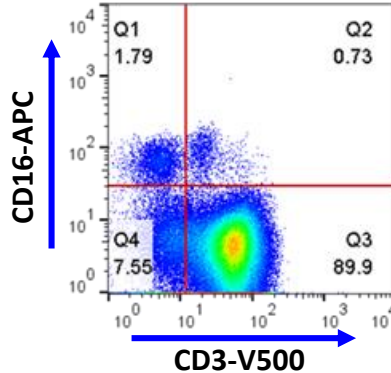
RBC lysed Baboon blood was stained with Caprico CD86-PE and Caprico CD14-mFluor450. Monocyte population is shown plotted CD14 vs. CD86.

MαH CD11c (3.9)



Frozen Baboon PBMCs were directly stained with Caprico CD11c-PE. (Lin-HLA-DR+ population)

MαH CD16 (3G8)



Frozen Baboon PBMCs were directly stained with Caprico CD16-APC and CD3 V500. (lymphocyte population)



INTERESTED IN TESTING AN ANTIBODY NOT LISTED?
YOU'LL GO BANANAS OVER OUR CURRENT PROMOTION!



CONTACT US TODAY FOR ADDITIONAL INFORMATION

Acknowledgement: All primary flow data courtesy of Dr. Vida Hodara, Texas Biomedical Research Institute.

Caprico Biotechnologies, Inc. • 400 Pinnacle Way, STE 430 • Norcross, GA, 30071 • 678-691-2143

www.capricobio.com • info@capricobio.com

ISO9001:2015 & ISO13485:2016 Certified

Copyright ©2018 Caprico Biotechnologies All Rights Reserved