



CATALOG #: 3101

10x, 100 ml

Red Blood Cell Lysis Reagent

The majority of cells present in human peripheral blood are red blood cells (RBCs), thus, any assay analyzing white blood cells (WBCs) will require the removal of RBCs from your sample, optimizing your results. Discover Caprico RBC Lysis Reagent for the rapid and selective removal of RBCs from human blood samples.

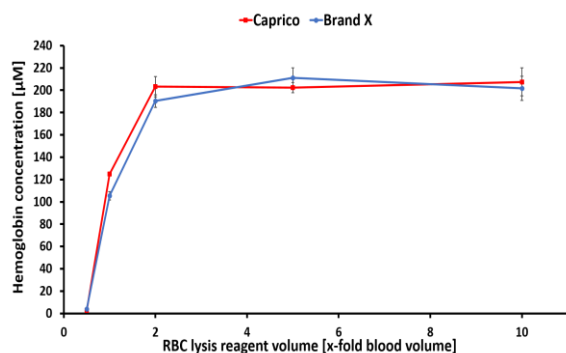


Figure 1. Effective lysis of RBC in human blood sample within 10 minutes.

Fresh blood (100 µl) was incubated with varying amounts of CBI RBC Lysis Buffer **Cat.# 3101** (red) or with a competitor's RBC Lysis Buffer (blue) while monitoring hemoglobin release.

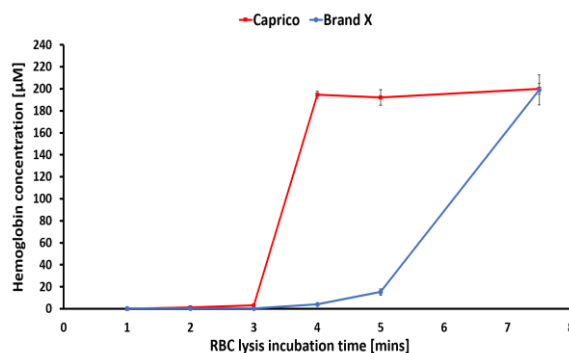


Figure 2. Rapid lysis of RBCs in human blood sample.

The comparative kinetics of hemoglobin release by either CBI RBC Lysis Buffer **Cat.# 3101** (red) or with a competitor's RBC Lysis Buffer (blue) using human blood samples (100 µl). Following the addition of two blood volumes of RBC Lysis Buffer (200 µl), hemoglobin release was measured at a series of time points.

EFFECTIVE LYSIS WITH RAPID RESULTS

Caprico Biotechnologies, Inc. • 400 Pinnacle Way, STE 430 • Norcross, GA, 30071 • 678-691-2143

www.capricobio.com • info@capricobio.com

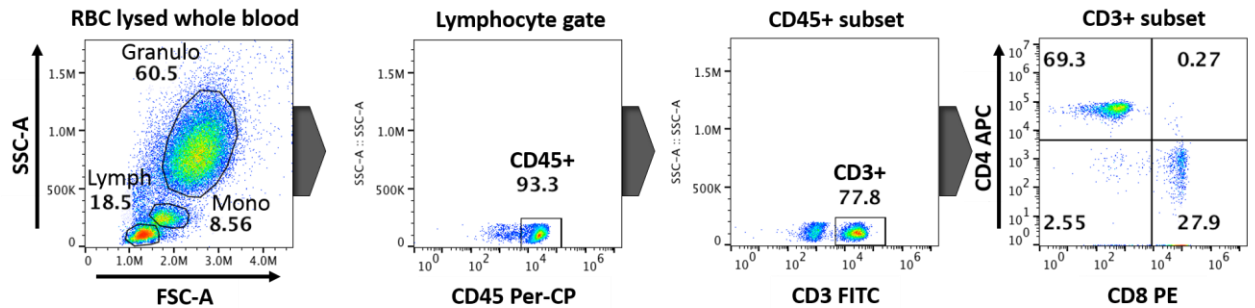
ISO9001:2015 & ISO13485:2016 Certified

Copyright ©2018 Caprico Biotechnologies All Rights Reserved



Flow Cytometry Products & Services

A



B

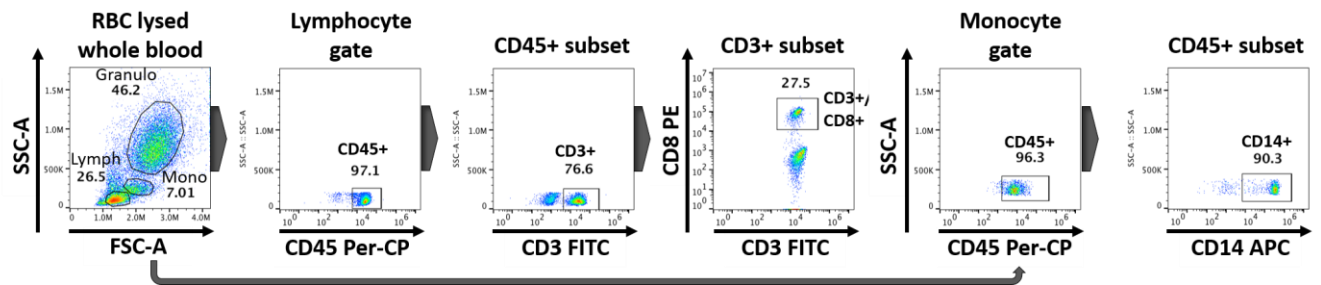


Figure 3. Preservation of cell populations and CD antigen expression using CBI RBC Lysis Reagent. A human blood sample treated with CBI RBC Lysis Reagent maintains preservation of three morphological populations in FSC/SSC gating (Lymphocytes, Monocytes, Granulocytes) under exacerbated incubation conditions (20x volume, 20 minute incubation). **(A)** Caprico panel of CD45 Per-CP, CD3 FITC, CD4 APC and CD8 PE subdivides the Lymphocyte population into CD4+ and CD8+ T cells. **(B)** Caprico panel of CD45 Per-CP, CD3 FITC, CD8 PE and CD14 APC identifies CD8+ T cells among lymphocytes and verifies the identity of monocytes.

PRODUCT NAME	CATALOG NUMBER	PRODUCT DESCRIPTION	PRODUCT SIZE	PRODUCT PRICE
CAPRICO RBC LYSIS BUFFER	3101	Used for the highly selective and rapid removal of RBCs from human blood samples	100 mL	\$50.00
CD45 Per-CP	101635	Present on all human leucocytes	100 tests	\$252.00
CD3 FITC	100315	Marker for T lymphocytes, NK T cells, and some thymocytes	100 tests	\$49.00
CD4 APC	100445	Specific marker for T lymphocytes, monocytes, macrophages, and dendritic cells	100 tests	\$64.00
CD8 PE	100625	Expressed on the surface of cytotoxic T cells, NK cells, cortical thymocytes, and dendritic cells.	100 tests	\$59.00
CD14 APC	103445	CD14 antibody reacts with interfollicular macrophages, reticular dendritic cells and some Langerhans cells	100 tests	\$119.00