



Caprico Biotechnologies

Caprico Biotechnologies Non-Human Primate Primary Antibodies

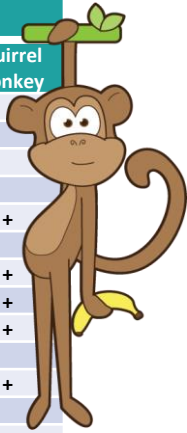
We are going bananas for Caprico's

Non-Human Primate Primary Antibodies

EXPLORE CAPRICO'S NHP PRIMARY mAb OPTIONS

Tab.1: Predicted NHP cross-reactivity of selected clones available at Caprico Biotechnologies.

Antigen	Clone	Non-Human Primate species								
		Chimp	Rhesus	Baboon	Cynomolgus	AGM	PTM	Marmoset	Tamarin	Squirrel Monkey
CD3	OKT3		+		+					
CD3	UCHT1	+								
CD4	OKT4	+	+		+					
CD8	OKT8		+	+					+	
CD11c	3.9		+	+	+					+
CD14	26ic			+						
CD14	M5E2	+	+		+			+		+
CD16	3G8	+	+	+	+	+	+	+	+	+
CD20	2H7	+	+	+	+					+
CD33	WM53	+								
CD38	OKT10		+	+	+		+			+
CD45RO	UCHL1	+						+		
CD54	LB-2		+	+	+					
CD62L	DREG56	+	+	+					+	
CD64	32.2		+	+						
CD66b	G10F5	+								
CD83	HB15e	+	+	+	+		+			
CD86	BU63	+	+	+						
CD90	F15-42-1-5				+					
CD154	5C8		+		+					
HLA-DR	L243	+	+	+	+	+	+	+	+	+
HLA-ABC	W6/32	+	+	+	+					



MαH CD20 (2H7)/ MαH CD40 (G28-5)

Cynomolgus

Rhesus

Baboon

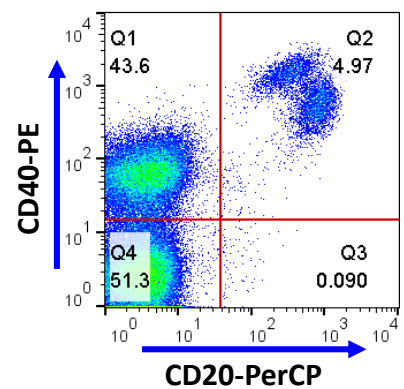
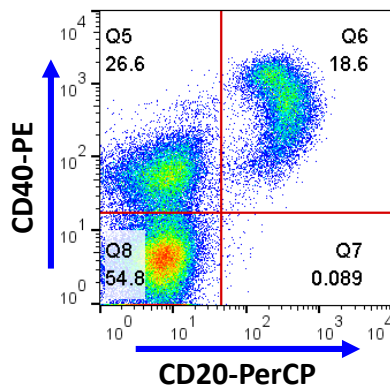
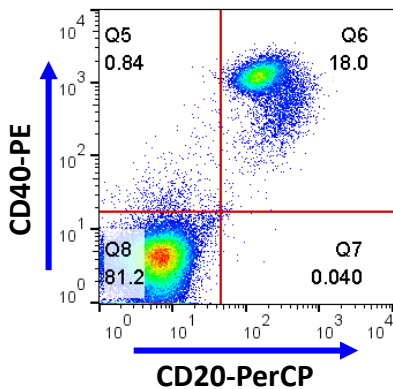


Fig.1: RBC lysed non-human primate blood stained with Caprico CD40-PE and CD20-PerCP, gated on CD14 negative population. Both antibodies work in Cynomolgus, Rhesus and Baboon; population pattern differences are species specific.

Caprico Biotechnologies, Inc. • 400 Pinnacle Way, STE 430 • Norcross, GA, 30071 • 678-691-2143

www.capricobio.com • info@capricobio.com

ISO9001:2015 & ISO13485:2016 Certified

Copyright ©2018 Caprico Biotechnologies All Rights Reserved



Caprico Biotechnologies

MαH CD20 (2H7)/ MαH HLA-ABC (w6/32)

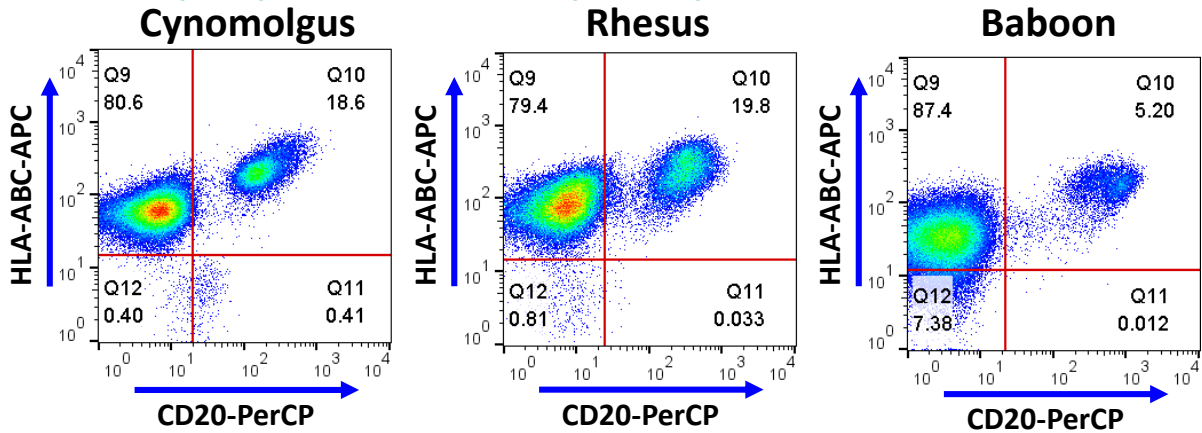


Fig.2: RBC lysed non-human primate blood stained with Caprico HLA-ABC-APC and CD20-PerCP, gated on CD14 negative population. Both antibodies work in Cynomolgus, Rhesus and Baboon.

MαH HLA-DR-PerCP-Cyanine5.5 (L243)

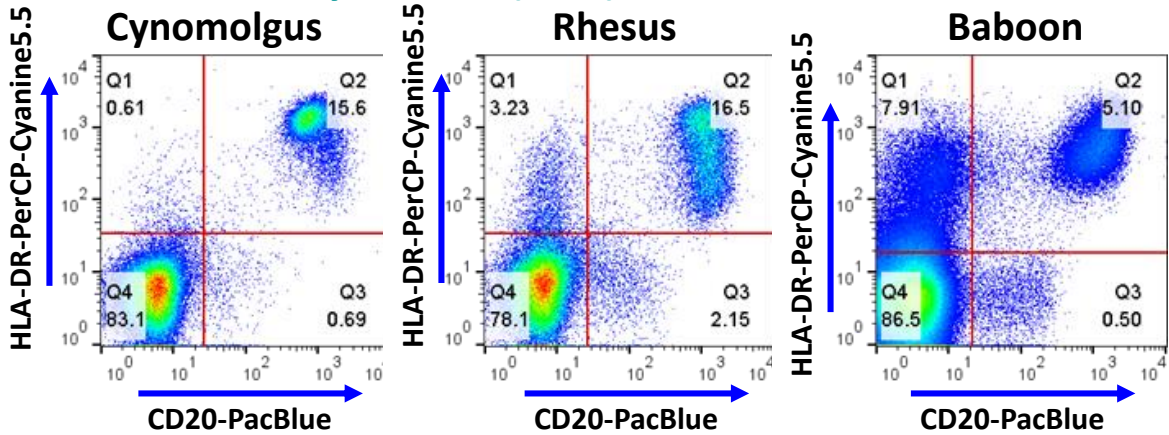


Fig.3: RBC lysed non-human primate blood stained with Caprico HLA-DR-PerCP-Cyanine5.5 and CD20-PacificBlue, gated on Lymphocyte population. Caprico HLA-DR antibody works in Cynomolgus, Rhesus and Baboon.

MαH CD4-PerCP-Cyanine5.5 (OKT4)

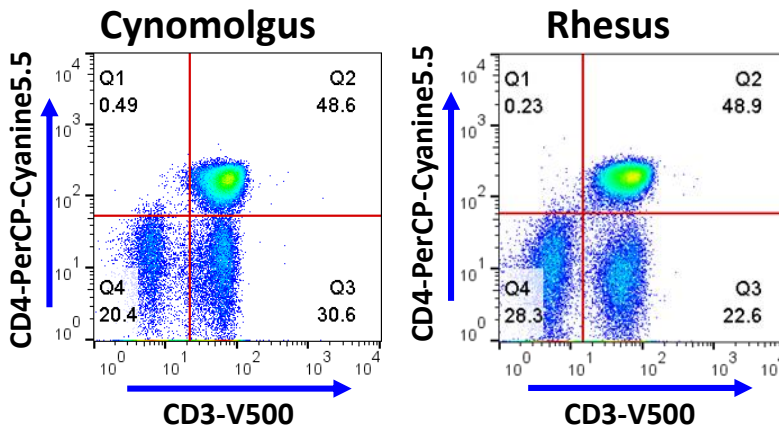


Fig.4: RBC lysed non-human primate blood stained with Caprico CD4-PerCP-Cyanine5.5 and CD3-V500, gated on Lymphocyte population. Caprico CD4 antibody works in both Cynomolgus and Rhesus monkeys.

CONTACT US TODAY FOR ADDITIONAL INFORMATION

Acknowledgement: All primary flow data courtesy of Dr. Vida Hodara, Texas Biomedical Research Institute.